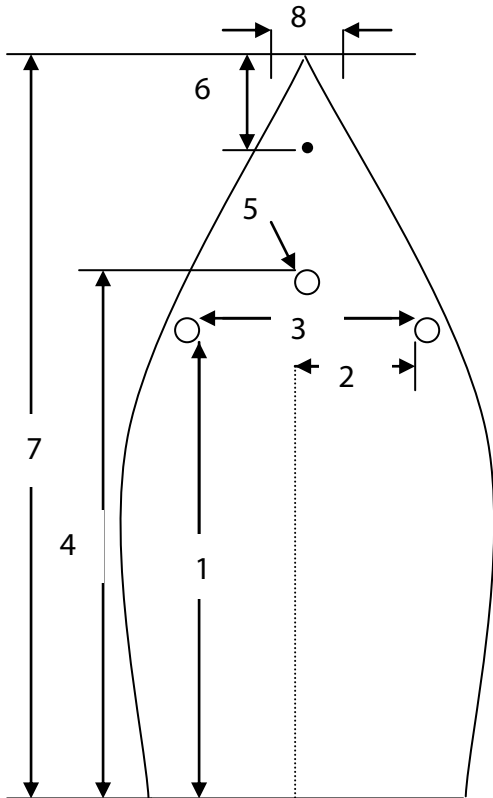


Boat Cover Made To Measure Form



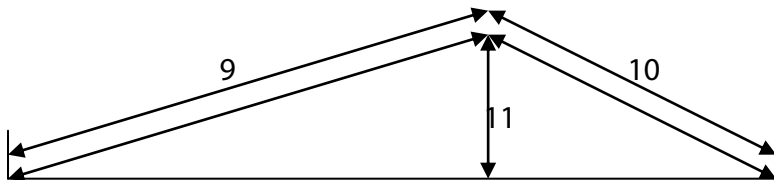
For Boom Up Covers

9. Transom to back of mast with boom up

10. Bow to front of mast with boom in position

11. height from top of boom to shearline

12. diameter of mast



eXtremegb Ltd
 Nene House
 Sopwith Way
 Daventry NN11 8PB
 United Kingdom

Tel: 0845 120 4500
 Fax: 0870 210 1047

www.sailgb.com

Starting with the transom show
Width of boat at 300mm intervals

Transom
Width
300mm
600mm
900mm
1200mm
1500mm
1800mm
2100mm
2400mm
2700mm
3000mm
3300mm
3600mm
3900mm
4200mm
4500mm
4800mm
5100mm
5400mm
5700mm

1. Transom to shroud
2. Distance inboard to shroud
3. Shroud to shroud
4. Transom to rear of mast
5. Shearline to top of boom (when fixed to gooseneck)
6. forestay to bow
7. Overall length
8. Width at bow

Dingy Type

Please tick		Please Tick	
Trailing-	<input type="checkbox"/>	Acrylic-	<input type="checkbox"/>
Flat-	<input type="checkbox"/>	Polyester-	<input type="checkbox"/>
Boom Up:-	<input type="checkbox"/>		

Name	_____
Address	_____

Post code	_____
Tel	_____
Mob	_____